

Influence of Process Parameters of Single Point Incremental Forming for Different Cup Shapes from AA1100-H18 Using FEA and Validation through Experimentation

T. Santhosh Kumar

P. G. Student, M. Tech (AMS), Roll No. 11011P0312, Department of Mechanical Engineering, JNTUH
College of Engineering, Hyderabad



Under the Guidance of Dr. A. Chennakesava Reddy, Professor, JNT University Hyderabad

ABSTRACT

In incremental sheet forming process, sheet is deformed into desired shape by a rigid spherical tool without dies. The process is carried out on a CNC machine. For a given shape of the product tool path is controlled by a part program. In recent years many researchers focused on study of deformation mechanism in single point incremental forming process (SPIF) through analytical and numerical models. Most of the numerical studies in incremental forming concentrated on prediction of formability and thinning. Using finite element methods, forming limit diagrams (FLD) were predicted for several materials such as AA1050 alloy, AA1070 alloy, AA1080 alloy, AA1100 alloy, AA2014 alloy, AA2017 alloy, AA2024 alloy, AA2219 alloy, AA2618 alloy, AA3003 alloy, AA5052 alloy, AA5039 alloy, Ti-Al-4V alloy, EDD steel and gas cylinder steel.

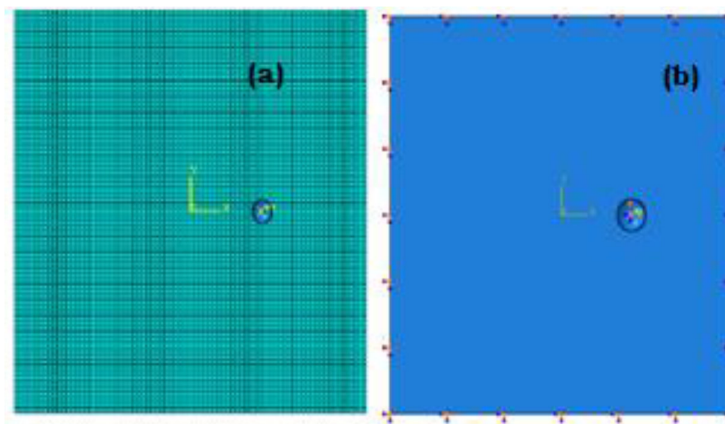


Figure 1: Finite element modeling: (a) mesh generation and (b) boundary conditions.

In the present work elastic-plastic scheme based on the incremental theory of plasticity was employed to simulate SPIF process instead of the conventional flow theory of plasticity minimize the computational time. The present work was to study the formability of pyramidal and conical of AA1100 alloy using SPIF. For this purpose the design of experiments was executed as per Taguchi technique. The process parameters of SPIF were sheet thickness, step depth, tool radius and coefficient of friction.

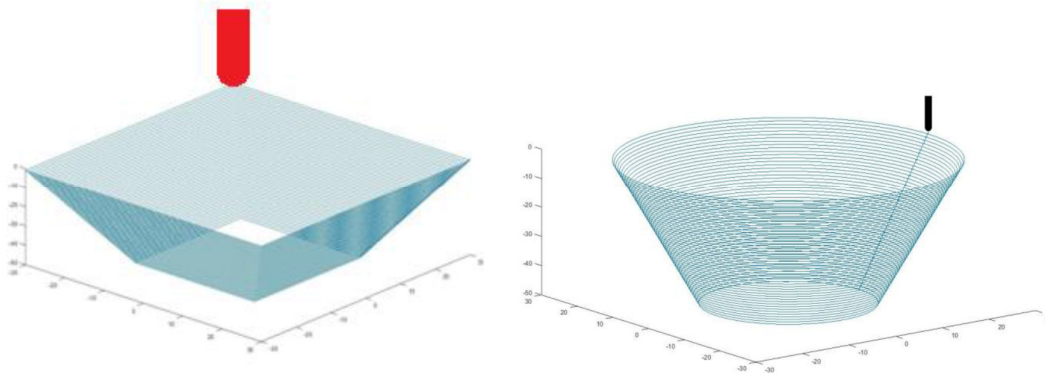


Figure 2: Tool path generation.

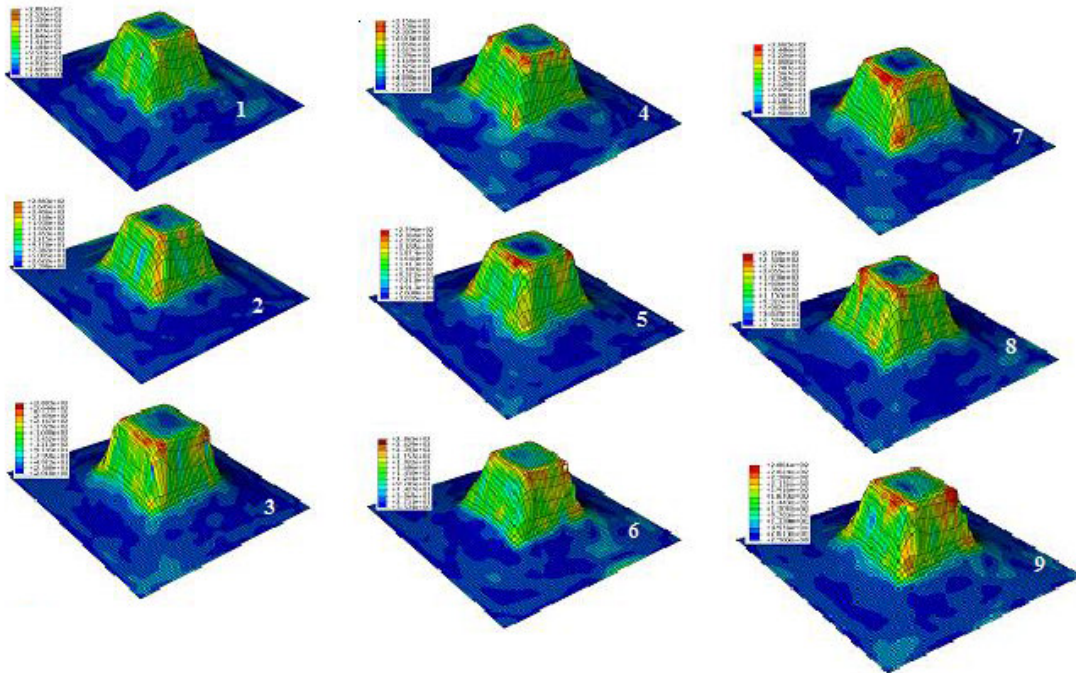


Figure 3: Raster images of von Mises stress in the pyramidal cups.

The major SPIF process parameters which influence the formability of truncated pyramidal and conical cups of AA1100-H18 alloy were sheet thickness and step depth of incremental forming process. The strain rate developed during the incremental forming of conical cups was within the limits of superplasticity.

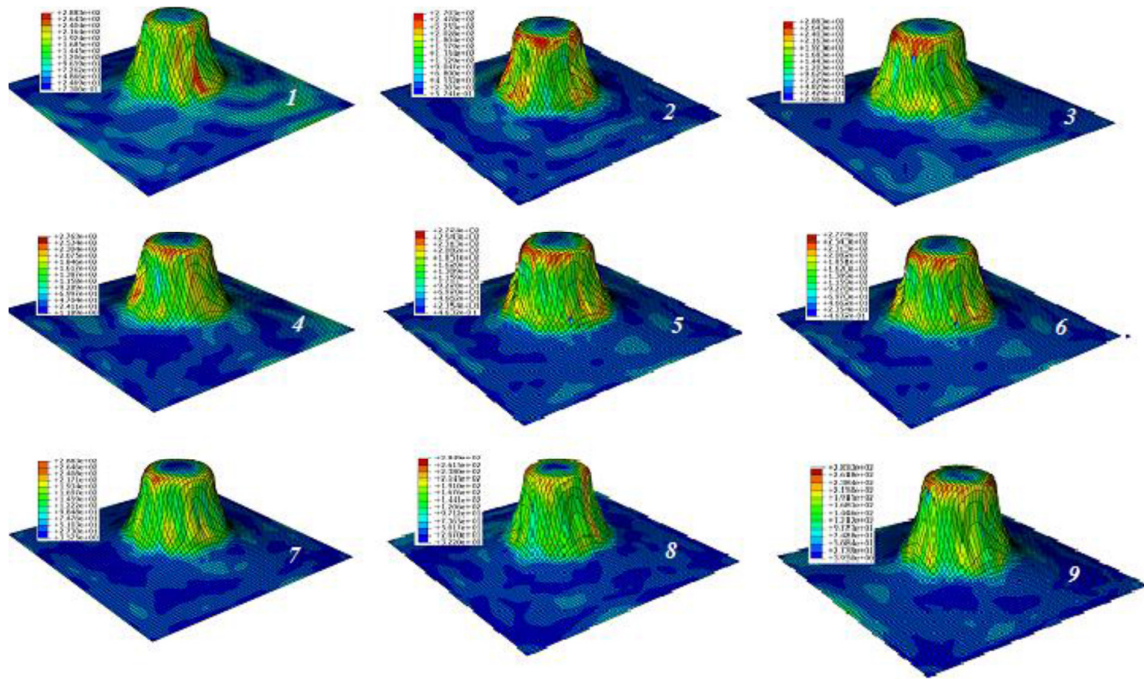


Figure 4: Raster images of von Mises stress in the conical cups.

REFERENCES

1. A. C. Reddy, Finite element analysis of reverse superplastic blow forming of Ti-Al-4V alloy for optimized control of thickness variation using ABAQUS, *Journal of Manufacturing Engineering*, National Engineering College, vol. 1, no. 1, pp. 6-9, 2006.
2. J. J. V. Jeysingh, B. Nageswara Rao, A. C. Reddy, Investigation on failures of hydroforming deep drawing processes, *Materials Science Research Journal*, 02, 03 & 04, 145-167, 2008.
3. J. J. V. Jeysingh, B. Nageswara Rao, A. C. Reddy, Development of a ductile fracture criterion in cold forming, *Materials Science Research Journal*, vol. 02, no. 3& 4, pp. 191-206, 2008.
4. A. C. Reddy, T. Kishen Kumar Reddy, M. Vidya Sagar, Experimental characterization of warm deep drawing process for EDD steel, *International Journal of Multidisciplinary Research & Advances in Engineering*, vol. 4, no. 3, pp. 53-62, 2012.
5. A. C. Reddy, Evaluation of local thinning during cup drawing of gas cylinder steel using isotropic criteria, *International Journal of Engineering and Materials Sciences*, vol. 5, no. 2, pp. 71-76, 2012.
6. A. C. Reddy, Homogenization and Parametric Consequence of Warm Deep Drawing Process for 1050A Aluminum Alloy: Validation through FEA, *International Journal of Science and Research*, vol. 4, no. 4, pp. 2034-2042, 2015.
7. A. C. Reddy, Formability of Warm Deep Drawing Process for AA1050-H18 Pyramidal Cups, *International Journal of Science and Research*, vol. 4, no. 7, pp. 2111-2119, 2015.
8. A. C. Reddy, Formability of Warm Deep Drawing Process for AA1050-H18 Rectangular Cups, *International Journal of Mechanical and Production Engineering Research and Development*, vol. 5, no. 4, pp. 85-97, 2015.
9. A. C. Reddy, Formability of superplastic deep drawing process with moving blank holder for AA1050-H18 conical cups, *International Journal of Research in Engineering and Technology*, vol. 4, no. 8, pp. 124-132, 2015.
10. A. C. Reddy, Performance of Warm Deep Drawing Process for AA1050 Cylindrical Cups with and Without Blank Holding Force, *International Journal of Scientific Research*, vol. 4, no. 10, pp. 358-365, 2015.

11. A. C. Reddy, Necessity of Strain Hardening to Augment Load Bearing Capacity of AA1050/AlN Nanocomposites, *International Journal of Advanced Research*, vol. 3, no. 6, pp. 1211-1219, 2015.
12. Kothapalli Chandini, A. C. Reddy, Parametric Importance of Warm Deep Drawing Process for 1070A Aluminium Alloy: Validation through FEA, *International Journal of Scientific & Engineering Research*, vol. 6, no. 4, pp. 399-407, 2015.
13. Kothapalli Chandini, A. C. Reddy, Finite Element Analysis of Warm Deep Drawing Process for Pyramidal Cup of AA1070 Aluminum Alloy, *International Journal of Advanced Research*, vol. 3, no. 6, pp. 1325-1334, 2015.
14. Balla Yamuna, A. C. Reddy, Parametric Merit of Warm Deep Drawing Process for 1080A Aluminium Alloy: Validation through FEA, *International Journal of Scientific & Engineering Research*, vol. 6, no. 4, pp. 416-424, 2015.
15. Balla Yamuna, A. C. Reddy, Finite Element Analysis of Warm Deep Drawing Process for Conical Cup of AA1080 Aluminum Alloy, *International Journal of Advanced Research*, vol. 3, no. 6, pp. 1309-1317, 2015.
16. Thirunagari Srinivas, A. C. Reddy, Parametric Optimization of Warm Deep Drawing Process of 1100 Aluminum Alloy: Validation through FEA, *International Journal of Scientific & Engineering Research*, vol. 6, no. 4, pp. 425-433, 2015.
17. Thirunagari Srinivas, A. C. Reddy, Finite Element Analysis of Warm Deep Drawing Process for Rectangular Cup of AA1100 Aluminum Alloy, *International Journal of Advanced Research*, vol. 3, no. 6, pp. 1383-1391, 2015.
18. A. C. Reddy, Parametric Optimization of Warm Deep Drawing Process of 2014T6 Aluminum Alloy Using FEA, *International Journal of Scientific & Engineering Research*, vol. 6, no. 5, pp. 1016-1024, 2015.
19. A. C. Reddy, Finite Element Analysis of Warm Deep Drawing Process for 2017T4 Aluminum Alloy: Parametric Significance Using Taguchi Technique, *International Journal of Advanced Research*, vol. 3, no. 5, pp. 1247-1255, 2015.
20. A. C. Reddy, Parametric Significance of Warm Drawing Process for 2024T4 Aluminum Alloy through FEA, *International Journal of Science and Research*, vol. 4, no. 5, pp. 2345-2351, 2015.
21. A. C. Reddy, Formability of High Temperature and High Strain Rate Superplastic Deep Drawing Process for AA2219 Cylindrical Cups, *International Journal of Advanced Research*, vol. 3, no. 10, pp. 1016-1024, 2015.
22. C. R Alavala, High temperature and high strain rate superplastic deep drawing process for AA2618 alloy cylindrical cups, *International Journal of Scientific Engineering and Applied Science*, vol. 2, no. 2, pp. 35-41, 2016.
23. C. R Alavala, Practicability of High Temperature and High Strain Rate Superplastic Deep Drawing Process for AA3003 Alloy Cylindrical Cups, *International Journal of Engineering Inventions*, vol. 5, no. 3, pp. 16-23, 2016.
24. C. R Alavala, High temperature and high strain rate superplastic deep drawing process for AA5049 alloy cylindrical cups, *International Journal of Engineering Sciences & Research Technology*, vol. 5, no. 2, pp. 261-268, 2016.
25. C. R Alavala, Suitability of High Temperature and High Strain Rate Superplastic Deep Drawing Process for AA5052 Alloy, *International Journal of Engineering and Advanced Research Technology*, vol. 2, no. 3, pp. 11-14, 2016.
26. C. R Alavala, Development of High Temperature and High Strain Rate Super Plastic Deep Drawing Process for 5656 Al- Alloy Cylindrical Cups, *International Journal of Mechanical and Production Engineering*, vol. 4, no. 10, pp. 187-193, 2016.
27. C. R Alavala, Effect of Temperature, Strain Rate and Coefficient of Friction on Deep Drawing Process of 6061 Aluminum Alloy, *International Journal of Mechanical Engineering*, vol. 5, no. 6, pp. 11-24, 2016.
28. T. Santhosh Kumar, V. Srija, A. Ravi Teja, A. C. Reddy, Influence of Process Parameters of Single Point Incremental Deep Drawing Process for Truncated Pyramidal Cups from 304 Stainless Steel using FEA, *International Journal of Scientific & Engineering Research*, vol. 7, no. 6, pp. 100-105, 2016.

29. A. Raviteja, A. C. Reddy, Implication of Process Parameters of Single Point Incremental Forming for Conical Frustum Cups from AA1070 Using FEA, *International Journal of Research in Engineering and Technology*, vol. 5, no. 6, pp. 124-129, 2016.
30. C. R Alavala, Fem Analysis of Single Point Incremental Forming Process and Validation with Grid-Based Experimental Deformation Analysis, *International Journal of Mechanical Engineering*, 5, 5, 1-6, 2016.
31. C. R Alavala, Validation of Single Point Incremental Forming Process for Deep Drawn Pyramidal Cups Using Experimental Grid-Based Deformation, *International Journal of Engineering Sciences & Research Technology*, vol. 5, no. 8, pp. 481-488, 2016.
32. Iseki, An approximate deformation analysis and FEM analysis of the incremental bulging of sheet metal using spherical rollers, *Journal of Materials Processing Technology*, 111, 2001, pp. 150-154.
33. M. B. Silva, M. Skjoedt, P.A.F. Martins, N. Bay, Numerical simulation of incremental forming of sheet metal, *Journal of Materials Processing Technology*, 199, 2008, pp.163-172.
34. Y. Minoru, G. Manabu S. Atsumi, Numerical simulation of incremental forming of sheet metal, *Journal of Materials Processing Technology*, 199, 2008, pp.163-172.
35. R. Feng, C. Zhen, Z. Cedric Xia, S. Todd, Z. Li, X. Zhu, Process modeling of freeform incremental forming, 11th International Ls-Dyna users conference, 2010, pp. 10.1-10.5.
36. C. R. Alavala, *Finite element methods: Basic Concepts and Applications*, PHI Learning Pvt. Ltd., 2008.
37. C. R. Alavala, *CAD/CAM: Concepts and Applications*, PHI Learning Pvt. Ltd, 2008.